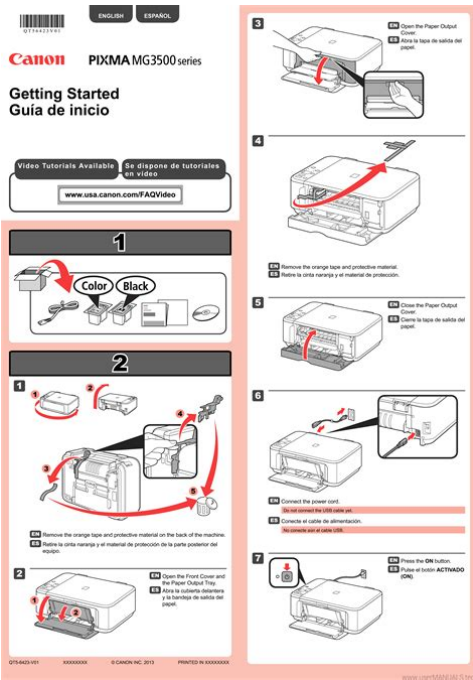


Canon ir3320i user manual



File Name: Canon ir3320i user manual.pdf

Size: 1497 KB

Type: PDF, ePub, eBook

Category: Book


Uploaded: 8 May 2019, 14:19 PM

Rating: 4.6/5 from 766 votes.

Download Now!

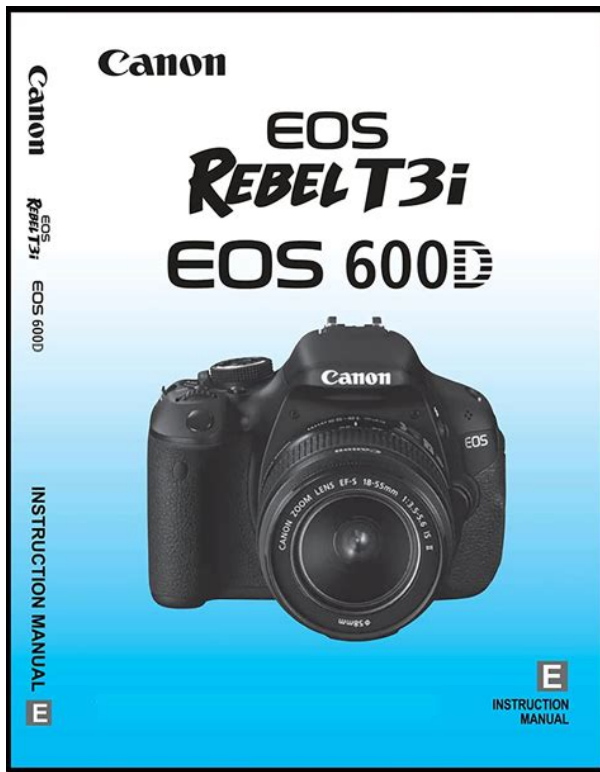
Please check the box below to proceed.

I'm not a robot


reCAPTCHA
Privacy - Terms

Book Descriptions:

Canon ir3320i user manual

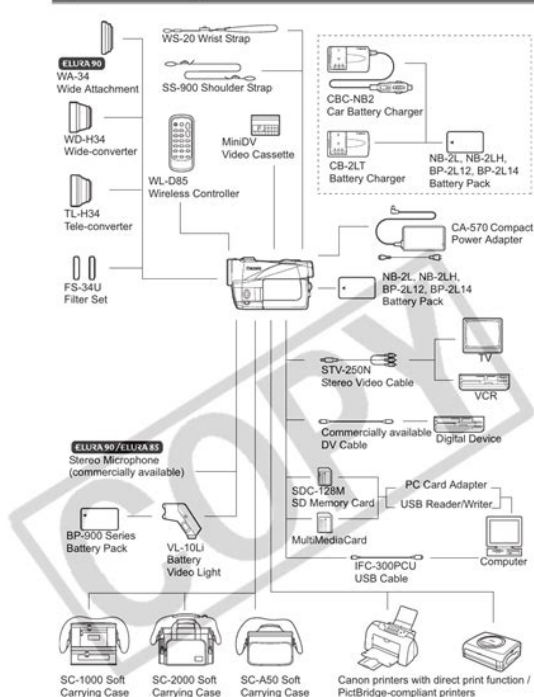


Please refer to them for detailed information. The manuals supplied with optional equipment are included in the list below. Depending on the system configuration and product purchased, some manuals may not be needed. Guides with this symbol are PDF manuals included on the Guides with this symbol are printed manuals. However, as we are constantly improving our products, if you need an exact specification, please contact Canon. Please read this manual thoroughly before operating the product in order to familiarise yourself with its capabilities, and to make the most of its many functions. After reading this manual, store it in a safe place for future reference. Note that functions that cannot be used depending on the model or options, are not displayed on the touch panel display. Ethernet is a trademark of Xerox Corporation, Inc. Macintosh is a trademark of Apple Computer, Inc. Chapter 2 Press to select the Special Features mode. The Reference Guide Press to check the progress of a copy job, change the order of printing, or cancel printing. Transparency p. 217 Press to select or cancel the Transparency Interleaving mode. This mode enables you to eliminate dark borders and lines that appear around original images, or shadows from punched holes. This is convenient when you cannot load all of the originals to be copied all at once. p. 256 Press to notify the user through email that the copy job has been completed. Set the copy mode on the Special Features screen. The Special Features screen is divided into two screens. When scanning is complete, remove the original. Flow of Copy Operations 113. However, this maximum number of copies can also be changed. For details, contact your service representative. Specifying the Required Number of Copies Press numeric keys to enter the desired copy quantity 1 to 999. The copy quantity appears in the upper right side of the touch panel display. Press numeric keys to reenter the copy quantity 1 to 999. <http://www.spuni.cz/files/dreambox-dm800-hd-pvr-manual.xml>

- **canon ir3320i service manual pdf, canon ir3320i user manual, canon ir3320i user manual pdf, canon ir3320i user manual download, canon ir3320i user manual free,**

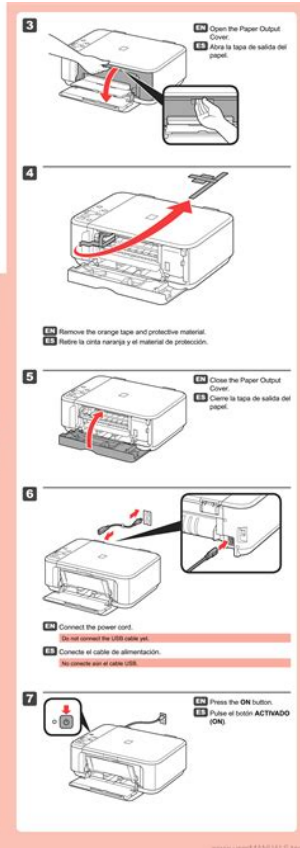
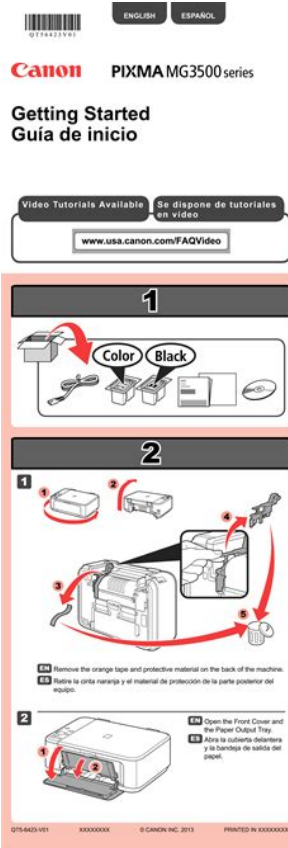
canon ir3320i user manual software.

System Diagram (Availability differs from area to area)



150

The copy quantity appears in the upper right side of the touch panel display. For example, the original scanned by this machine can be printed by the remote copy printer independently remote copying or simultaneously cascade copying. You can select only a remote copy printer that supports the selected copy settings. The registered remote copy printer connected to the machine is displayed. The printers that do not support the chosen settings are shown, but are greyed out. And, even if the remote copy printer supports the Copy mode, if you select settings other than Collate and Group, you can select only a remote copy printer equipped with the same finisher as the original copy machine. The available copy settings will include only those settings supported by the machines you have selected. The following screen is displayed. Press Copying starts. Selecting the Copy Paper Size Paper Select 129. Press Copying starts. The exposure is automatically adjusted to the level best suited to the quality of the original. In this case, use Manual Exposure Control. The display returns to the Basic Features screen. To enlarge, select a preset enlargement ratio. Press Copying starts. The available copy ratios are from 25% to 800% when the original is placed on the platen glass, and from 25% to 400% when the original is placed in the feeder. You can also enter values using numeric keys. The display returns to the Basic Features screen, and the selected copy ratio is displayed. If you enter a value outside the setting range, a message prompting you to enter the appropriate value appears on the screen. The available copy ratios are from 25% to 800% when the original is placed on the platen glass, and from 25% to 400% when the original is placed in the feeder. The display returns to the Basic Features screen. The display returns to the Basic Features screen, and the selected copy ratio is displayed. Press Copying starts. <http://www.szeplak.hu/images/upload/dreambox-dm800-hd-se-manual.xml>

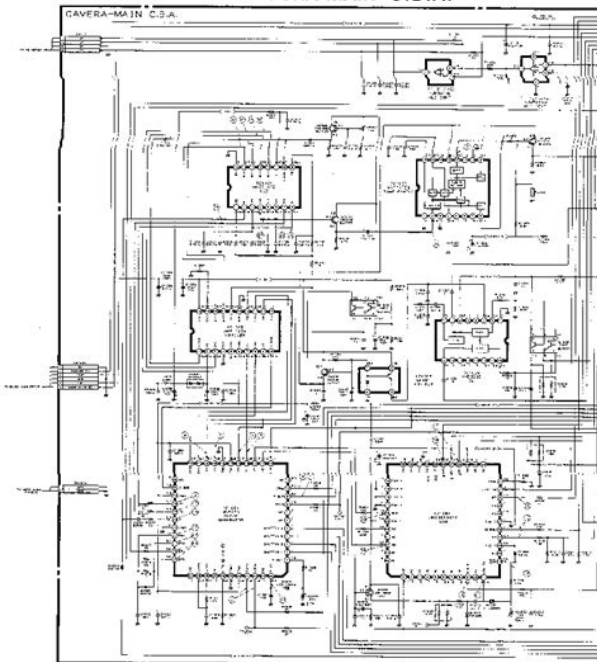


However, if you set the Entire Image mode, the copied image is slightly reduced proportionately to the paper and image size. The specified mode is set, and the display returns to the Basic Features screen. Press Copying starts. The display returns to the Basic Features screen, and the selected copy ratio is displayed. Place the original on the platen glass if the zoom ratio is more than 400%. The copied paper is output as face down. The output is as follows Originals Copy Set 1 Copy Set 2 Copy Set 3 Three Sets of Specified Copies When is set All copies of the same original page are automatically collated and grouped together. The output is as follows Grouped Grouped. Originals Copies When is set The machine punches 2 or 4 holes in the copied sheets. Originals Copies When is set If originals of the same size are placed, the pages are aligned, and the copy sets are output in alternating directions. Collating Copies Finisher 171. When the Finisher J1 is attached, the saddle stitch position cannot be selected. For details of the saddle stitch position, see Chapter 8, "Appendix," in the Reference Guide. The specified mode is set, and the display returns to the Basic Features screen. Press one time for each original. TwoSided Copying TwoSided 177. Press When the original is placed on the platen glass, follow the instructions that appear on the touch panel display. Press one time for each original. Copying starts. Press When the original is placed on the platen glass, follow the instructions that appear on the touch panel display. Copying starts. If these originals are placed vertically, the back sides of the copies will be printed upside down. TwoSided Copying TwoSided 183. Press Copying starts. If you want to make copies in page order, begin copying from the first page and work your way forward. Place the original face down, so that its top edge is aligned with the back edge of the platen glass. Your scanned documents are processed after the current job is completed.

Interrupt copy jobs are not included in this count. After the current job is complete, repeat the operation. Reserved Copying 189. This mode is useful if you need to make a rush copy during a long copy job. Once the original is scanned, remove it from the machine. To change the number of copies, use numeric keys. Repeat the procedure. 194 Checking a Sample Set Before Copying Sample Set The display shows the Setting Confirmation screen of the selected copy mode settings. Checking the Copy Mode Settings Setting Confirmation 195. The display returns to the Setting Confirmation

screen. The specified mode is set, and the display returns to the Basic Features screen. Press Copying starts. You may also copy on this cover sheet. Back Cover Adds a back cover sheet to each set of copies. You may also copy on this back cover. This function is useful when you want to divide your copy sets into different sections with a blank sheet. You can also copy on these sheet insertions. Originals Copies When the Saddle Finisher G1 is attached. The specified mode is set, and the display returns to the Basic Features screen. The machine automatically interleaves a sheet of paper between each transparency. The interleaf sheets protect the copied surface of the transparencies. They can also be printed with the same images as the transparencies or left blank. When the original is placed on the platen glass, follow the instructions that appear on the touch panel display. Copying starts. The copies are printed with the copied side face down. The transparency is first, followed by the interleaf sheet. The shift direction refers not to the direction in which the original is placed on the platen glass or in the feeder, but to the direction that you want the original image shifted, if the original image is viewed as face up and situated in the centre of the copy page. When entering values in millimetres, you can use numeric keys and NOTE. The diagonal directional arrow is displayed.

SCHEMATIC DIAGRAM CAMERA-MAIN C.B.A.



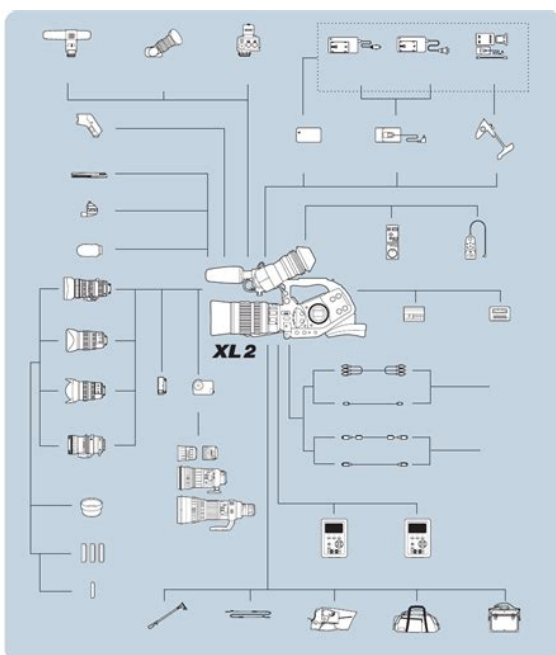
01 May, 1991

<http://ninethreefox.com/?q=node/11399>

Use this mode when you want the copies placed in a ring binder. Select the Margin type, and set the Margin Width. The specified mode is set, and the display returns to the Basic Features screen. If you select one of these modes, the previously set mode is cancelled. Copy Book Frame Erase Selected Original Copy Book Frame Erase Not Selected IMPORTANT. When entering values in millimetres, you can use numeric keys and If you enter the value with. The specified mode is set, and the display returns to the Basic Features screen. When entering values in millimetres, you can use numeric keys and to clear your entries. When entering values in millimetres, you can use numeric keys and to clear your entries. The specified mode is set, and the display returns to the Basic Features screen. The position of the binding holes refers not to the position in which the original is placed on

the platen glass, but to the position of the binding holes when the surface of the original that you want to scan is viewed as face up, with the top edge at the top. Originals Copy 8 On 1 Reduces eight, 1sided or four, 2sided originals to fit onto one side or both sides of a copy sheet. The specified mode is set, and the display returns to the Basic Features screen. The following two Image Separation features are available 1 to 2 1sided and 2sided copies, and 1 to 4 1sided and 2sided copies. Dividing an Original Into Equal Sections and Enlarging Each Section on a Separate Copy Sheet Image 247 Separation The specified mode is set, and the display returns to the Basic Features screen. Press When there are multiple originals, follow the instructions that appear on the display and press once for each original. The specified mode is set, and the display returns to the Basic Features screen. Press When the original is placed on the platen glass, follow the instructions that appear on the touch panel display. You can use both the feeder and the platen glass for scanning.

<http://detsindustrial.com/images/bt-cordless-phones-manuals.pdf>



The originals are copied as one document, after all the batches have been scanned. Originals Copies IMPORTANT. The specified mode is set, and the display returns to the Basic Features screen. Press Scanning starts. Repeat this procedure as necessary. This is useful when waiting for large copy jobs to end or when using the remote copying features. Press Copying starts. This is useful when you want to store the most frequently used Copy functions. When storing is complete, the message appears for about two seconds on the touch panel display. The name appears on the memory key. A message appears to confirm that you want to erase the copy mode. The message appears for about two seconds on the touch panel display. The stored copy mode is erased. For instructions on how to change the name, see "Storing a Memory Key Name,". The display returns to the Basic Features screen. The following two setting methods are available for the Image Repeat mode. Automatic Setting The original image is copied so that the maximum number of copies possible fits onto the selected paper. Original Copy Manual Setting. The number of times an image can repeat is from 1 to 20. The specified mode is set, and the display returns to the Basic Features screen. Press Copying starts. The specified mode is set, and the display returns to the Basic Features screen. Register in the machine Entire Image Original Copy Composition. The following screen is displayed after the sample prints. The display returns to the Special Features screen. Press Copying starts. Enter a value from 1

to 9999 using numeric keys for the page number to start from. Copy Settings Table.32 Setting Standard Keys. You can store up to two Standard Keys in addition to the Copy Ratio, Finisher, and TwoSided Mode keys on the Basic Features screen, the Special Features screen, or the memory keys containing stored copy settings in Mode Memory. The specified mode is set. Example The stored Standard Keys are displayed as shown below.

<https://dfwdrivingschool.com/images/bt-combat-manual.pdf>



Standard Key 1 Standard Key 2 Setting Standard Keys. With this function, you can set whether to copy the image in the same direction as the original. This section describes how to customise Standard Settings to suit your needs, or return the Standard Settings to their default settings. The message appears for about two seconds on the touch panel display. You can set up to seven remote copy printers on this machine. Select a timeout setting from 5 to 30 seconds in 1second increments. Restoring Settings to Their Default Copy Settings 321. Combination Available Combination Unavailable Priority to LatterSet Mode Priority to Image Combination, Image Separation and Booklet mode Ratio can be changed Function Intend to Set Preset Zoom. This page requires Javascript. Modify your browsers settings to allow Javascript to execute. See your browsers documentation for specific instructions. To install your download click on the name of the downloaded file. Canon Authorized Dealers provide the highest quality service and are supported by Canon certified technicians using Canon Genuine parts. Please contact your Canon Authorized dealer for all your service needs. Need to find a dealer The driver may be included in your OS or you may not need a driver. Recommended Drivers File Name Date File Size Optional Drivers File Name Date File Size Recommended Software File Name Date File Size Optional Software File Name Date File Size Recommended Manuals File Name Date File Size Optional Manuals File Name Date File Size. Please check your inbox, and if you can't find it, check your spam folder to make sure it didnt end up there. Please also check your spam folder. Please refer to them for detailed information. Depending on the system configuration and product purchased, some manuals may not be needed. After reading this manual, store it in a safe place for future reference. In order to use the machine safely, always pay attention to these warnings.

In order to use the machine safely, always pay attention to these cautions. Be sure to read these items carefully in order to operate the machine correctly, and to avoid damage to the machine. Reading these is highly recommended. Note that functions that cannot be used depending on the

model or options, are not displayed on the touch panel display. Select the keys which suit your needs. All rights reserved. To use the copy function of this machine, press keys in accordance with the messages displayed on the touch panel display. This is called the Basic Features screen. You may also make onesided copies from a twosided original. This screen is divided into two screens. The Special Features screen displays special functions available for copying. In some cases, when a function is selected, a more detailed screen for the selected mode appears. This is useful when you want to learn more about a function. This mode enables you to copy two pages of an opened book onto separate copy sheets. This mode enables you to insert a sheet between each transparency when copying transparencies. This mode enables you to create margins along the sides of copies. This mode enables you to eliminate dark borders and lines that appear around original images, or shadows from punched holes. This mode enables you to automatically reduce two, four, or eight originals to fit on a onesided or twosided copy sheet. This mode enables you to divide an original into 2 or 4 sections, and enlarge each section onto a copy sheet of a specified size. This is convenient when you cannot load all of the originals to be copied all at once. This mode enables you to make copies of original images reproduced with a sharper or a softer contrast. You can continue setting other available modes. See Chapter 2, "Additional Copy Functions." Then, press. See "Reserved Copying," on p. 188. However, this maximum number of copies can also be changed. For details, contact your service representative.

<http://www.whirlpool-beachcomber.at/wp-content/plugins/formcraft/file-upload/server/content/files/162715fa615fc0--bradbury-hoist-manual.pdf>

Both of these options are described below. If an odd number of copies is set, the machine you are copying from will print one additional copy. Also, if the finishers attached to this machine and the remote copy printer are different, the finisher settings can only be set to the Collate and Group modes. You can select only a remote copy printer that supports the selected copy settings. And, even if the remote copy printer supports the Copy mode, if you select settings other than Collate and Group, you can select only a remote copy printer equipped with the same finisher as the original copy machine. You must include your own machine as one of the output devices. The available copy settings will include only those settings supported by the machines you have selected. For details, see Chapter 8, "Appendix," in the Reference Guide. The following three modes are available for adjusting image quality Blueprints or penciled originals can be copied clearly. When printing is complete, the display returns to the Basic Features screen. Please do not offer the downloaded file for sell only use it for personal usage. Looking for other manual For this no need registration. May be help you to repair. You could suffer a fatal electrical shock. Instead, contact your nearest service center. Note! To open downloaded files you need acrobat reader or similar pdf reader program. In addition, Also some files are djvu so you need djvu viewer to open them. These free programs can be found on this page needed progs If you use opera you have to disable opera turbo function to download file. If you cannot download this file, try it with CHROME or FIREFOX browser. Translate this page Relevant PRINTER forum topics CANON IP4200 tap K30246 felfeszultseget ad ki. Hello mindenkinek! Sajna bekrepalt a tapomK30246 a nyomtatoban. Legalabbis ugy tunik. Mindenhol feleakkora feszultseg jon ki rajta mint kellene. Valaki esetleg tudna ehhez a taphoz rajzot feltenni.

domainersuite.com/ckfinder/userfiles/files/747-400-flight-crew-training-manual.pdf

Koszi elore is i865 canon nyomtato Udv Kollegak! Canon i865 tipusu nyomtatohoz keresek tapegyseg rajzot. A Tanyan levo smben nincs benne. Az is segitene, ha tudnam, hogy a taprol mennyi feszultseg jon le stbyban. Koszonettel. El. Canon iP2500 Szevasztok. Van egy Canon iP 2500 as nyomtatom amibol a szines patron hianyzik. Most viszont egy patronnal szabotall. Lehet e kezdeni igy valamit a nyomtatoval Eredetileg a fej dugulasa miatt nem nyomtatott. A fejet sikerult teljesen kitisztitani, minden jarat tiszta, fuvokakon nincs serules. Elektromosan kimerve a fejet teljesen normalis ertekek, szoval nincs zarlat sehol. A patronokat felismeri, tintaszinteteket latja, fejtisztitast elvezzi.

Nyomtataskor a statuszablakban semmilyen hibakod nincs, teljesen normalis, nyomtat is, viszont a papirra egy csepp tinta nem kerül. A használt tinta tartály meg nem ért el kritikus értéket, a biztonság kedvéért visszaállítottam 20%-os telítettségre, az sem használt. Probáltam vadonatúj patronokkal, többszöri melytisztítással, hogy töltsék fel újra a fejet. Kb. a tinták felet elhasználták, latszik is, hogy már lucskos a fej, de semmit nem nyomtat, meg a fúvókatesztre sem. Probáltam gyári eredeti patronokat atteni egy másik nyomtatóból, felismeri, tisztítja, de nem nyomtat velük sem. Itt elakadt a tudomány, barmi ötletet szívesen veszek. Similar manuals You can write in English language into the forum not only in Hungarian. About the Manuals for the Machine if you need an exact specification, please contact Canon. Download and Read Canon Ir3320i Manual Canon Ir3320i Manual In this age of modern era, the use of internet must be maximized. Yeah, internet will help us very much CANON U.S.A.,Inc. MAKES NO GUARANTEES OF The imageRUNNER 3320i is a complete digital communications hub designed to support busy Manual Bypass. 50 Sheets Download and Read Canon Ir3320i Manual Canon Ir3320i Manual No wonder you activities are, reading will be always needed. CANON U.S.A.,Inc.

MAKES NO GUARANTEES OF ANY KIND PIXMA MG3220 Inkjet Photo AllInOne PIXMA MG3220 Inkjet Photo AllInOne Manuals and other documents Setup CD Canon Ir 3320i Manual Automatic or Manual. Halftone Canons imageRUNNER 3320 Series is a highly advanced digital imaging solution designed to act as a dynamic central., Transact sql case example, Cincinnati form tax, Almond crop report, Retail business publication. Reload to refresh your session. Reload to refresh your session. Page Count 4 Download Fax Machine Users Manual of Canon L140 for free.Recent Questions.More FAXL380 User s Guide. About The Manuals For The. Machine canonlaserclass710fax. Some think of it as an owners manual, an instruction manual, an end user handbook, anCANON super g3 Canon Laser Class 2060P Manual Fax Guide. Canon Laser Class CANON. Canon Super G3 Fax Machine User Manual. File Type Extension pdf. PDF Version 1.4. Linearized No. Author Softplicity. Subject. Page Count 4. Page Mode UseOutlines. Description. Creator Softplicity. Title Canon Super G3 Fax Machine User Manual. Creator Tool Softplicity. Keywords. Producer Softplicity. Discover everything Scribd has to offer, including books and audiobooks from major publishers. Start Free Trial Cancel anytime. Report this Document Download Now save Save iR3320i For Later 0 ratings 0% found this document useful 0 votes 37 views 12 pages iR3320i Uploaded by Moh Flit Description doc ir canon 3320 Full description save Save iR3320i For Later 0% 0% found this document useful, Mark this document as useful 0% 0% found this document not useful, Mark this document as not useful Embed Share Print Download Now Jump to Page You are on page 1 of 12 Search inside document Browse Books Site Directory Site Language English Change Language English Change Language. Using the online preview, you can quickly view the contents and go to the page where you will find the solution to your problem with Canon IR2220I.

To start viewing the user manual Canon IR2220I on full screen, use the button Fullscreen. However, if you do not want to take up too much of your disk space, you can always download it in the future from ManualsBase. The option to print the manual has also been provided, and you can use it by clicking the link above Print the manual. You do not have to print the entire manual Canon IR2220I but the selected pages only. paper. If you want to quickly view the content of pages found on the following pages of the manual, you can use them. Please refer to them for detailed information. Guides with this symbol are PDF manuals included on the Guides with this symbol are printed manuals.Troubleshooting Copying Instructions CopyinPCL Printer Driver Installation and PS Driver Guide Instructions. Fax Driver Installation and Instructions Fax Driver Guide.After reading this manual, store it in a safe place for future reference. How to Use This Manual Symbols Used in This Manual The following symbols are used in this manual to explain procedures, restrictions, handling cautions, and it also contains instructions Note that functions that cannot be used depending on the model or options, are not displayed on the touch panel display. The keys which you should press are marked with, as shown below. When multiple keys can be pressed on the touch panel display, all

keys are marked. Select the keEthernet is a trademark of Xerox Corporation, Inc. Macintosh is a trademark of Apple Computer, Inc. Other products and company names herein may be the trademarks of their respective owners. CopyrightHowever, when you want to use this machine as a remote copy printer, set the Image OrientatChapter 2 Press to select the Special Features mode. The Reference Guide. Press to check the progress of a copy job, change the order of printing, or cancel printing. This screen is divided into two screens.

This mode enables you to automatically reduce two, four, or eight originals to fit on a onesided or twosThis is convenient when you cannot load all of the originals to be copied all at once. p. 256 Press to notify the user through email that the copy job has been completed.This mode enables you to make copies of original images reproduced with a sharper or a softer contrast. p. 277 Press to superimpose an image stored in memory onto the original image for copying. p. 281 Press to inclu. File names having the extension.pdf are PDF files. You need to have Adobe Acrobat Reader installed on your computer to read PDF files. Click on the file name to view the manual using your web browser. You may download and use the Content solely for your personal, noncommercial use and at your own risks. Canon shall not be held liable for any damages whatsoever in connection with the Content, including, without limitation, indirect, consequential, exemplary or incidental damages. You shall also not and shall not let others reproduce, modify, reformat or create derivative works from the Content, in whole or in part.

<https://www.thebiketube.com/acros-bosch-hbn-350-manual>